

Takayasu arteritis associated with hepatic sinusoidal dilatation

Cécile Durant,* Jérôme Martin,* Baptiste Hervier,* Jérôme Gournay,** Mohamed Hamidou*

* Internal Medicine, CHU Nantes Hotel Dieu, Nantes, France. ** Gastro-enterology, CHU Nantes Hotel Dieu, Nantes, France

ABSTRACT

Hepatic sinusoidal dilatation (HSD) is a pathological entity that is characterized by peliosis hepatis (PH) like lesions, with vascular lesions that consist of multiple cyst-like, blood-filled cavities within the liver. To the best of our knowledge, neither PH nor HSD have been associated with systemic vasculitis. We describe herein two cases of idiopathic HSD associated with Takayasu arteritis (TA), diagnosed at an early stage of vasculitis. The same endothelial target in HSD and TA, and the favorable outcome of HSD with treatment of TA, suggest a pathogenic link between the two diseases.

Key words. Takayasu arteritis. Peliosis. Hepatic sinusoidal dilatation.

INTRODUCTION

Takayasu arteritis (TA) is a chronic, inflammatory vasculitis that affects aorta and its major branches of unknown etiology. TA predominantly affects young women. The clinical presentation is characterized by an acute inflammatory phase with nonspecific and vascular symptoms (vascular injury, absence of pulse, ischemia) followed by a chronic phase (vascular fibrosis, occlusion or aneurysm). Therapy is based on corticosteroids and immunosuppressive drugs. Hepatic sinusoidal dilatation (HSD) is a rare pathological entity that is characterized by peliosis hepatis (PH)-like lesions, with vascular lesions that consist of multiple cyst-like, blood-filled cavities within the liver. We describe herein two cases of HSD associated with TA, which was diagnosed prior to any treatment of vasculitis.

CASE REPORT

Case 1

An 18-year-old woman, without significant medical history or medication (including oral contracep-

tives) was hospitalized for persistent fever and 6 kg weight loss. She complained of precordial and abdominal pain. Physical examination disclosed hepatomegaly. Laboratory analysis revealed 7.8 g/dL haemoglobin (Hb), normal white blood cell (WBC) and platelets count, C-reactive protein (CRP) was elevated at 168 mg/L. She had cholestasis, (γ -GT 1.50 μ kat; PA 3.60 μ kat) and cytolysis (ASAT 2.4 μ kat/L, ALAT: 2.6 μ kat/L). Blood and urinary cultures and viral serology were negative, as were anti-nuclear and anti-neutrophilic cytoplasmic antibodies. Total computed tomography (CT) revealed thoraco-abdominal aortitis with thickening of the aortic wall, and heterogeneous liver enlargement. Vascular Doppler ultrasonography disclosed inflammatory arteritis of the aorta, carotid (Figure 1), mesenteric and renal arteries, in accordance with a diagnosis of TA. Liver biopsy disclosed HSD with round intralobular cavities filled with red blood cells, and hemorrhagic suffusion (Figure 2) without granuloma or neoplastic lesions. She was treated by 3 pulses of IV methylprednisolone (5 mg/kg) followed by 1 mg/kg/day prednisone. The biological hepatic parameters were normal 2 months later.

Case 2

A 20-year-old woman was hospitalized for a 6-month fever and inflammatory syndrome. She had no previous medical history. She complained of sweating, asthenia and weight loss. Physical exami-

Correspondence and reprint request: Cécile Durant, MD.
Internal Medicine. Hôpital Saint Louis
1 avenue Claude Vellefaux. 75010 Paris, France
E-mail: cecile.durant@sls.aphp.fr
Tel.: +33142499756. Fax: +33142499769

*Manuscript received: June 16, 2011.
Manuscript accepted: August, 5 2011.*

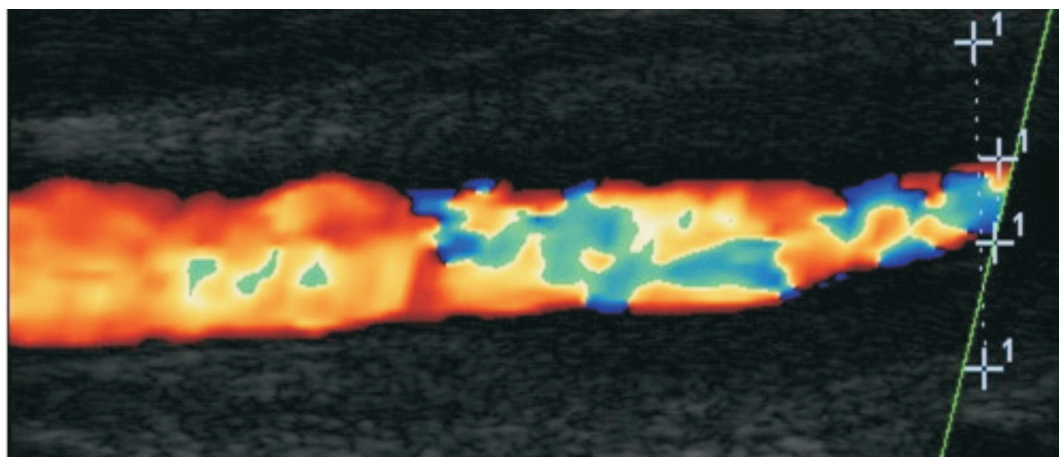


Figure 1. Colour Doppler ultrasonography of the internal carotid artery showing the typical halo sign (concentric hypoechoogenic mural thickening) of inflammatory arteritis in accordance with a diagnosis of Takayasu arteritis (TA).

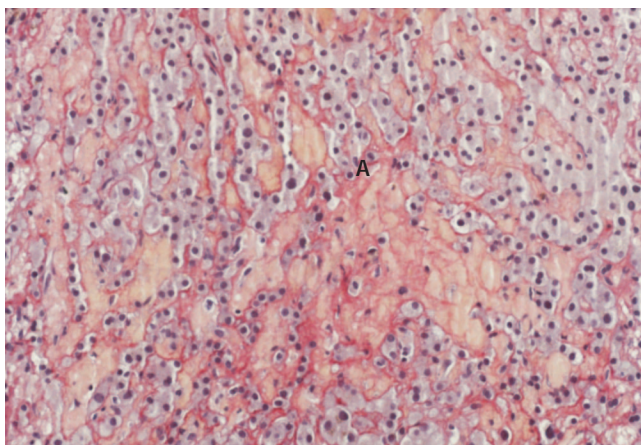


Figure 2. Liver biopsy showing a pattern of hepatic sinusoidal dilatation (HSD) with presence of a cystic blood filled space in liver parenchyma (A) (picosirius stain, original magnification x 200). Round intralobular cavities filled with red blood cells and hemorrhagic suffusion.

nation was normal. CRP was at 80 mg/L. She had cholestasis, (γ -GT 2.50 μ kat; PA 3.20 μ kat; ASAT, ALAT: normal). Cultures and viral serology were negative, as were anti-nuclear, mitochondrial, smooth muscle, and LKM antibodies. CT scan showed a voluminous hepatomegaly. Pathological analysis of the liver revealed HSD with enlargement of portal area, and a hepatocytic degeneration. One year later, she complained of carotidodynia. Physical examination disclosed diffuse vascular murmurs. A CT scan showed aortic and carotid inflammatory arteritis evocative of TA. She was treated with 3 pulses of IV methylprednisolone (5 mg/kg) followed by 1 mg/kg/day prednisone. Hepatic parameters were normal 3 months later.

DISCUSSION

Liver manifestations are reported in rheumatic diseases such as systemic lupus erythematosus, primary antiphospholipid syndrome, polymyositis, Sjögren's syndrome, scleroderma, rheumatoid arthritis and Felty's syndrome.¹ These manifestations include association with chronic active hepatitis, primary biliary cirrhosis, primary sclerosing cholangitis, and nodular regenerative hyperplasia. Our patients are believed to be the first cases of HSD reported in association with TA. In both cases, there was hepatomegaly and unexplained cholestasis that required liver biopsy, which led to diagnosis of HSD. These young women had no other etiology for HSD. The cholestasis arose during steroid treatment, which suggested a cause-and-effect relationship. Peliosis hepatitis is a rare condition, characterized by the presence of blood-filled cavities of variable size, which often lack an endothelial lining. HSD is characterized by PH-like lesions. The distinction between the HSD and PH is not always sharp. PH and HSD are often accidentally found on biopsies, with no clinical significance but in some cases, hepatic dysfunction is associated. Rarely, hemorrhage or portal hypertension can occur. Imaging features are non-specific.^{2,3} HSD results of blood flow impairment (veno-occlusive disease, Budd-Chiari syndrome, or right-sided heart failure) or can be associated with sinusoidal infiltration. In 2004, Kakar, *et al.* reviewed 51 HSD liver biopsies⁴ and found only 6 patients with inflammatory disease. Chronic wasting diseases or infections (tuberculosis, HIV and *B. henselae*), advanced neoplasms, renal transplantation and adverse effects of various drugs (steroids, azathioprine, 6-thioguanine, 6-mercaptopurine and oral contraceptives) are the most frequent causes of

HSD and PH in adults. Isolated cases of HSD associated with inflammatory disease have been reported.^{5,6} PH remains unexplained in 20-50% of cases. In inflammatory disease, the pathophysiology of HSD is really unknown.

CONCLUSION

HSD is a rare hepatic manifestation in vasculitis such as TA. It has to be added to the spectrum of hepatic manifestations that occur in autoimmune disease. We propose that the HSD could reflect endothelial cell damage observed in TA.

CONFLICTS OF INTEREST

None.

REFERENCES

1. Abraham S, Begum S, Isenberg D. Hepatic manifestations of autoimmune rheumatic diseases. *Ann Rheum Dis* 2004; 63: 123-9.
2. Lannaccone R, Federle MP, Brancatelli G, Matsui O, Fishman EK, Narra VR, et al. Peliosis hepatis: spectrum of imaging findings. *Am J Roentgenol* 2006; 187: W43-W52.
3. Bruguera M, Aranguibel F, Ros E, Rodes J. Incidence and clinical significance of sinusoidal dilatation in liver biopsies. *Gastroenterology* 1978; 75: 474-8.
4. Kakar S, Kamath PS, Burgart LJ. Sinusoidal dilatation and congestion in liver biopsy is it always due to venous outflow impairment? *Arch Pathol Lab Med* 2004; 128: 901-4.
5. Ferrozzi F, Tognini G, Zuccoli G, Cademartiri F, Pavone P. Peliosis hepatis with pseudotumoral and hemorrhagic evolution: CT and MR findings. *Abdom Imaging* 2001; 26: 197-9.
6. Poulsen H, Winkler K, Christoffersen P. The significance of centrilobular sinusoidal changes in liver biopsies. *Scand J Gastroenterol Suppl* 1970; 7: 103-9.